

## Current Chaplains & Assistants of Todd County



Mike Dorsey



David & Brandi  
(Assistant)  
Hembree



Kenneth  
Greenfield



Jean Odum



Jeff Penick

## Current Chaplains of Nelson County



Phil Bradley



Terry Troutman

## Current Chaplains & Assistants of Logan County



Mike & Janice  
Humble



David Foster,  
Assistant



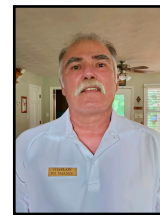
William  
Washington



Larry & Teresa  
Richey



Brian Humble



Jim Marney



# BURDEN BEARERS CHAPLAINCY PROGRAM



"Bear ye one another's  
burdens..." Galatians 6:2

# Helping to Bear the Burdens of others...

## Primary Purpose

The primary purpose of the Burden Bearer Chaplaincy Program is to serve our law enforcement, firefighters, and other emergency personnel. The stress level is very high in those brave first on the scene responders. Therefore, the Chaplains are able to be a sounding board; encouraging and assisting in keeping strong mental health after horrific scenes, and help in everyday stresses they face with family, and the community.

Our secondary purpose is to serve our community in crisis intervention, emergency situations, and as the public needs through 911 calls.



Cross standing on the street in New York City, just outside of Ground Zero, 2001.

## History

Chaplain Chief Mike Humble served the firefighters and police at the piles at Ground Zero in September, 2001. After seeing the stress in the faces of these he served, God spoke to him that rural America also needed Chaplains. In March, 2002, the first *On Call* Chaplain rotation began. Working with the various emergency service agencies of Logan County, Kentucky.

## Training & Protocols

*The Burden Bearer Chaplains are volunteer ministers who are screened and go to specific trainings to learn to serve in*

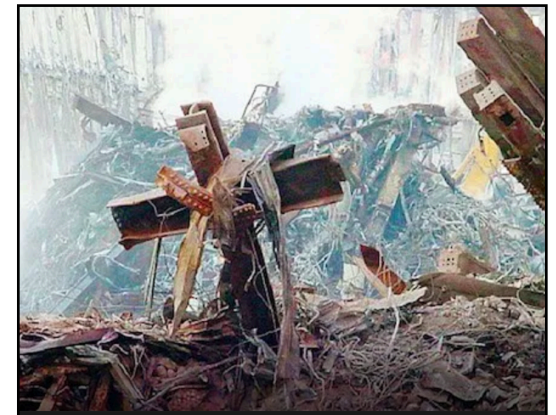
The Chaplains go through extensive training courses. Some of these include certification for Kentucky Fire Chaplains; International Conference of Police Chaplains Basic & Advance training; Basic & Advance training for Chaplains with the Kentucky Police Academy in Richmond, Kentucky.

Our protocols (automatic *call outs*) include: structure fires; deaths; serious accidents; suicide threats; missing children; serious accident or death of children; fires requiring multiple departments; injury or death of law enforcement officer firefighter or emergency personnel or their families; transportations; as requested by the public or agency personnel and more. We will average close to 300 *call outs* a year.

## Chaplains Serving Police, Firefighters, and Emergency Personnel

Burden Bearer Chaplains serve our brave Law Enforcement, Firefighters, Search & Rescue, EMS, Central Dispatch and other emergency personnel.

They are specially trained to deal with and respond to crisis intervention.



The cross at Ground Zero, September, 2001.

### Agape' Service Foundation, Inc.

PO Box 412  
Russellville, KY. 42276

Phone: 270-726-7109

Fax: 270-726-1412

Email: [therealagapesvc@yahoo.com](mailto:therealagapesvc@yahoo.com)

Website: [www.agapesvf.com](http://www.agapesvf.com)

